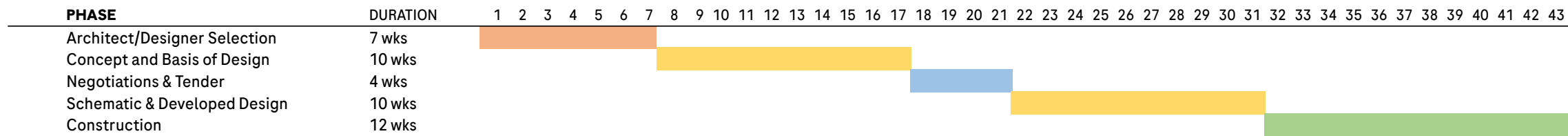


TYPICAL PROJECT PROCESS: ARCHITECT/DESIGNER SELECTION & DESIGN

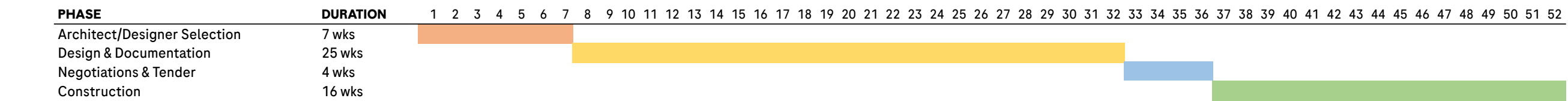
Phases

PHASE	DESCRIPTION
 Architect or D&B Selection	Beginning with project Kick-off through Designer/Architect award. Refer to Arch. Selection diagram for detailed breakdown of activities
 Design & Documentation	Beginning with Architect Appointment and Kick-off through completion of Construction Documents. Refer to Design & Construction diagram for detailed breakdown of activities
 Negotiations & Tender	Bidding & Negotiation through Contract Signing
 Construction	Design implementation

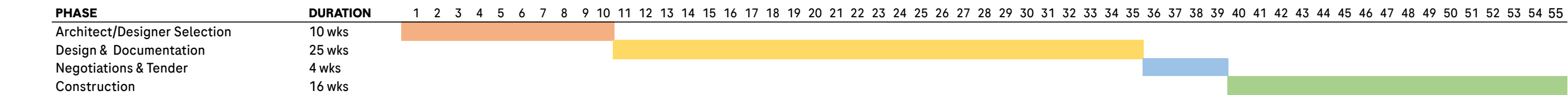
Concept Designer + D&B
Medium Size & Complexity Project



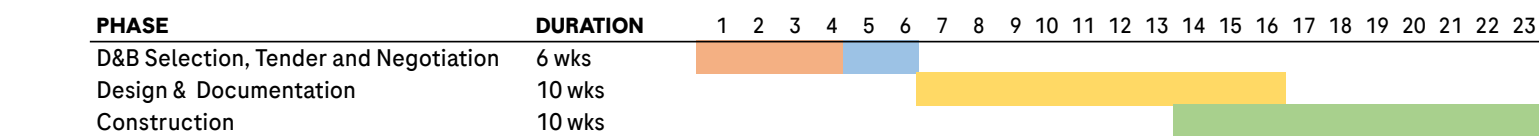
Traditional model- with MSA Designer
Large / High Complexity Project



Traditional model - standard
Large / High Complexity Project



D&B single phase
Small / Low Complexity Project



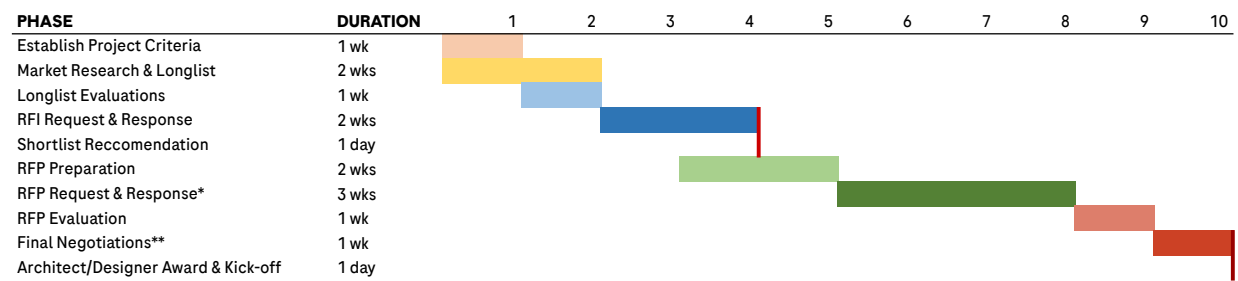
TYPICAL DESIGNER/ARCHITECT SELECTION

Phases & Process Steps

PHASE	DESCRIPTION
Establish Project Criteria	Project Kick-off with Global Architect, TPM and project team
Market Research & Longlist	Evaluation of potential candidates from prequalified list of global partners, or within local market with a goal of establishing a longlist
Longlist Evaluations	Global Architect compiles a longlist - reviews with local team and TPM
RFI Request & Response	TPM conducts an RFI process in order to gauge interest and capabilities of potential firms
Shortlist Recommendation	Global Architect proposes a shortlist - reviews with local team and TPM; team confirms final shortlist for tender
RFP Preparation	TPM prepares tender package - reviews with local team and Global architect
RFP Request & Response	TPM conducts a formal tender process with shortlisted firms
RFP Evaluation	RFP responses are analysed and evaluation matrix is completed by the Global Architect, TPM, and local team
Architect/Designer Award & Kick-off	Architectural/Design firm is awarded, a Kick-off meeting is held for process review

Traditional model: Project Designer Selection

Large / High Complexity Project

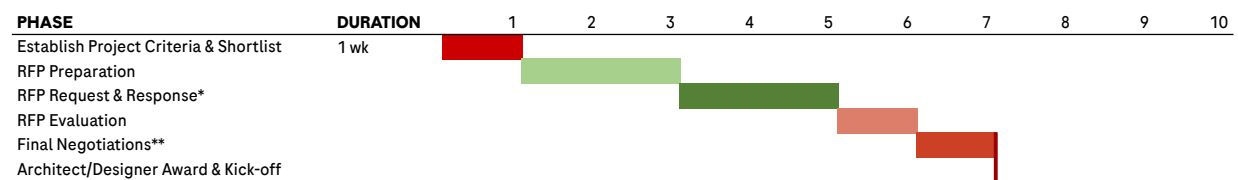


*note: time period can vary from 2 weeks to 3 based on size of project and RFP requirements

**note: time period can vary based on local requirements

2-Stage D&B + CD model: Concept Designer Selection***

Medium Size & Complexity Project



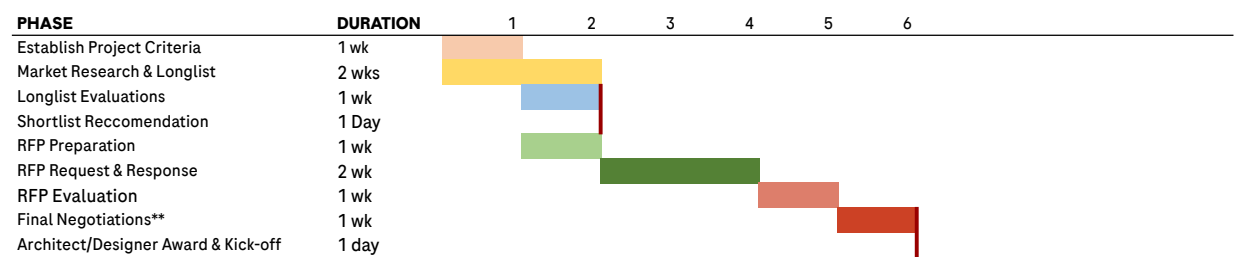
*note: time period can vary from 2 weeks to 3 based on size of project and RFP requirements

**note: time period can vary based on local requirements

***note: same process applies to Traditional Model with MSA Designer

D&B single phase model: D&B Selection

Small Project / Low Complexity



*note: time period can vary from 2 weeks to 3 based on size of project and RFP requirements

**note: time period can vary based on local requirements

TYPICAL DESIGN APPROVAL PROCESS
Steps & Deliverables

Applicable to Concept/Layout, Schematic Design, and Developed (Detailed) Design phases

